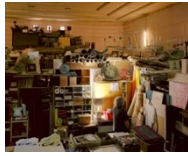


CHRIS CORSON-SCOTT | *"We passed the setting sun"*  
June 14 – July 15, 2016

*John Perry In His Workshop, Former Regent Cinema, Helensville, 2016*  
Archival pigment print  
110 x 136 cm  
Edition 1 of 7  
\$6500 (framed, museum glass)



*Former New Zealand Shipping Company Building, Tokomaru Bay, 2016*  
Archival pigment print  
110 x 137 cm  
Edition 1 of 7  
\$6500 (framed, museum glass)



*Evening, The Frank Sargeson House, Esmonde Road, Takapuna, 2015*  
Archival pigment print  
110 x 137  
Edition 1 of 7  
\$6500 (framed, museum glass)



*Cliffs and Rockfalls, Awhitu Peninsula, 2015*  
Archival pigment print  
150 x 189 cm  
Edition 2 of 7  
\$8000 (framed, UV plexiglass)



*Wildflowers In A Development Near Tauranga, 2015*  
Archival pigment print  
110 x 135 cm  
Edition 1 of 7  
\$6000 (framed, UV plexiglass)



*Undersea Cables, Pink Beach, Whangaparaoa, 2015*  
Archival pigment print  
140 x 174 cm  
Edition 1 of 7  
\$8000 (framed, UV plexiglass)



*Collapsing Roof, Gisborne Sheep Shearers Woolstore, Tokomaru Bay, 2016*  
Archival pigment print  
140 x 175  
Edition 1 of 7  
\$8000 (framed, UV plexiglass)



*Last Light, Tokomaru Bay Wharf, 2016*  
Archival pigment print  
140 x 174 cm  
Edition 1 of 7  
\$8000 (framed, UV plexiglass)



*Remnants of Paratutae Wharf, Whatipu, 2015*  
Archival pigment print  
110 x 137 cm  
Edition 1 of 7  
\$6500 (framed, museum glass)