

TRISH CLARK GALLERY

“taking stock” 13 December – 28 January, 2017

Galia Amsel | Stephen Bambury | Chris Corson-Scott | Phil Dadson | John Edgar | Jennifer French | Anthony McCall | Kazu Nakagawa | Marie Shannon | Ann Shelton | Heather Straka | Vincent Ward |



ANN SHELTON
The Vixen, Ginger (Zingiber sp.), 2015
Pigment print
1119 x 840mm
Edition 2 of 6



ANN SHELTON
The Ingenu, Yarrow (Achillea sp.), 2015
Pigment print
1119 x 840mm
Edition 2 of 6



ANN SHELTON
The Child Bride, Thistle, 2015
Pigment print
1119 x 840mm
Edition 2 of 6



ANN SHELTON
The Handmaid, Queen Anne's Lace (Daucas sp.), 2015
Pigment print
1119 x 840mm
Edition 2 of 6



MARIE SHANNON
Lights, 2016
Archival inkjet print
Edition 1 of 5
635 x 800mm (unframed), 803 x 967mm (framed)



KAZU NAKAGAWA
To Weigh the Fall of Light V, 2016
Pencil on paper / archival matt, 250gsm
324 x 450 x 31mm (framed)



PHIL DADSON
March Music 1 - 31, 2016
Mixed media: paint, ink, wax, burn and smoke marks on paper

TRISH
CLARK
GALLERY



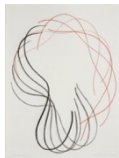
JOHN EDGAR
Discus, 2014
Basalt (Timaru, NZ), granite (Brazil)
180 x 660 x 660 mm



STEPHEN BAMBURY
Chamatkara, 2016
Chemical action on aluminium, acrylic, 12k white gold and 23k gold
1678 x 896 mm



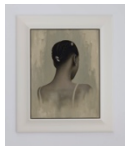
ANTHONY MCCALL
Landscape for Fire, 1972
Digitized 16mm film, 7.5 minutes
Edition 9 of 15



ANTHONY MCCALL
Study for Throes (225, 270, 315, 360, 405 seconds),
2012
Charcoal and oil pastel on paper
765 x 565mm (unframed)



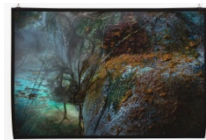
HEATHER STRAKA
X marks The Spot 17, 2016
Oil on canvas
605 x 505mm (framed)



HEATHER STRAKA
Street Parade 2, 2016
Oil on canvas
605 x 505mm (framed)



VINCENT WARD
Palimpsest / Landform 2, 2016
Archival pigment print
800 x 1000mm (unframed)
Edition 1/7



VINCENT WARD
Palimpsest / Landform 3, 2016
Archival pigment print
800 x 1000mm (unframed)
Edition 1/7

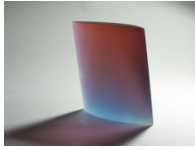


GALIA AMSEL
Rest, 2016
Cast, sandblasted, acid etched and polished gaffer
bronze glass
335 x 1055 x 155mm



JOHN EDGAR
Blue Cross, 2016
Marble (Italy) and glass
147 x 148 x 149mm

TRISH
CLARK
GALLERY



GALIA AMSEL
Heavenly 3, 2014
Cast gaffer Sapphire rose and pale aquamarine glass,
sandblasted, acid etched and hand finished and polished
220 x 220 x 44mm



JOHN EDGAR
Lens, 2016
Serpentine (India) and marble (Spain)
196 x 196 x 59mm



HEATHER STRAKA
X marks The Spot 16, 2016
Oil on canvas
605 x 505mm (framed)



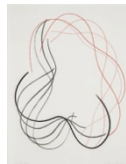
GALIA AMSEL
Ingress, 2016
Cast bent and layered gaffer glass clear cane and black grain, cut, hand
smoothed and polished
Diameter 530mm / depth 62mm



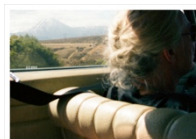
STEPHEN BAMBURY
Fourteen Mirrors (X) 2014
chemical action on aluminium
169 x 233mm (2 panels)



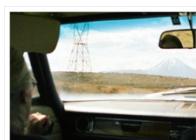
CHRIS CORSON-SCOTT
New Year's Day, 2013
Archival pigment print
Edition 3/7
1500 x 1850mm



ANTHONY MCCALL
Study for Throes (0, 45, 90, 135, 180 seconds), 2012
Charcoal and oil pastel on paper
765 x 565mm (unframed)

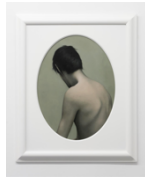


JENNIFER FRENCH
*"In order to build a solid aspiration from the cycle of existence we must
thoroughly examine our condition" - The Dalai Lama, 1994' (Detail 5)*, 2014
Archival Pigment Print on Hahnemuhle Photo Rag Paper
700 x 1000mm

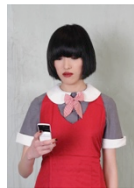


JENNIFER FRENCH
*"In order to build a solid aspiration from the cycle of existence we must
thoroughly examine our condition" - The Dalai Lama, 1994' (Detail 6)*, 2014
Archival Pigment Print on Hahnemuhle Photo Rag Paper
700 x 1000mm

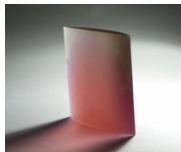
TRISH
CLARK
GALLERY



HEATHER STRAKA
Honey Trap 17, 2015
Oil on cotton on board
680 x 560mm



HEATHER STRAKA
Betty Txt, 2009/2015
C-type print
Edition 3 of 5
1060 x 780mm (framed)



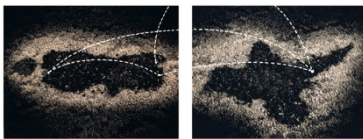
GALIA AMSEL
Heavenly 2, 2014
Cast gaffer Sapphire rose and bronze glass, sandblasted,
and hand finished and polished
215 x 215 x 37mm



STEPHEN BAMBURY
IC089342, 2008
Iron filings and acrylic on aluminium
1200 x 1200 x 80mm



JOHN EDGAR
Saltire, 2014
Granite (Coromandel, New Zealand) red granite (Corrennie, Scotland)
185 x 185 x 60mm



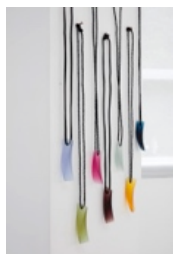
MARIE SHANNON
Map of the Places, 1992
Diptych, silver gelatin prints, Sepia toned
Edition 4 of 12
500 x 600mm each



GALIA AMSEL
Inspirit 2, 2015
Cast bullseye bronze and clear glass, hand smoothed and polished
420 x 950 x 175mm



JOHN EDGAR
Green Cross, 2016
Marble (Italy), glass
113 x 114 x 114mm



GALIA AMSEL
Neck Pieces, 2016
Cast glass with leather cord or pleated linen
In drawer for viewing