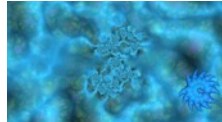
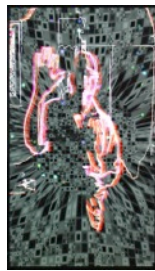


TRISH
CLARK
GALLERY

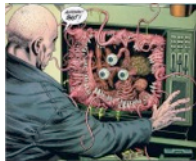
TIM GRUCHY | Kade's Cognition
16 February – 19 March, 2016



Portal 2016
Interactive multi-media software and hardware
50" flatscreen monitor
Edition 1 of 3 + 1 AP
\$7500



Storm 2015
Interactive multi-media software and hardware
65" flatscreen monitor
Edition 1 of 3 + 1 AP
\$8500



Clem's Lever (Pink) 2016 (PLEASE TOUCH)
Collaboration with Malcolm Enright
Interactive multi-media software and hardware
1500 x 570 x 400 mm
Unique
\$9800



Memory Cloud I 2016
Interactive multi-media software and hardware
42" flatscreen monitor
Unique content (commissions available)
\$6800



Anamnesis I 2016
Stand, projector (interactive), 2 archival acrylic slides
Unique
\$3800



Anamnesis II 2016
Stand, projector (interactive), 2 archival acrylic slides
Unique
\$3800



Anamnesis III 2016
Stand, projector (interactive), 2 archival acrylic slides
Unique
\$3800

TRISH
CLARK
GALLERY

Anamnesis IV 2016
Stand, projector (interactive), 2 archival acrylic slides
Unique
\$3800



Anamnesis V 2016
Stand, projector (interactive), 2 archival acrylic slides
Unique
\$3800



Anamnesis VI 2016
Stand, projector (interactive), 2 archival acrylic slides
Unique
\$3800



Anamnesis VII 2016
Stand, projector (interactive), 2 archival acrylic slides
Unique
\$3800

Tim Gruchy's career, spanning thirty plus years, is characterised by the exploration and composition of immersive and interactive multimedia installations, music and performance. He has exhibited since the 1980s, and intervened in public art arenas, while also undertaking various projects at the intersection of architecture and multimedia. His works are held in private, corporate and museum collections.

In his first solo exhibition at Trish Clark Gallery, Gruchy presents five distinct conceptual projects both inspired by and ruminating upon his extensive interest in the nexus where science and art collide and overlap, how science fiction influences culture and its development, and considerations of public and private memory.

Gruchy's installations and exhibitions have featured in many international and Australasian institutions, festivals and public spaces, including the Biennale of Sydney (2012) (collaboration), Beijing 798 (2011), Shanghai Expo (2010), 2nd Asian Art Biennial Taiwan (2009), Melbourne International Arts Festival (2009), Adelaide Festival (1986-2008), Auckland Arts Festival (2009); Taranaki International Arts Festival (2007) and Sydney Festival (2004). His work has been exhibited in New Zealand, Australia, China, Taiwan, The Netherlands, Belgium, UK, US, Japan, France and Thailand.