

AUCKLAND ART FAIR
BOOTH B7
25 – 29 MAY, 2016

TRISH
CLARK
GALLERY



GALIA AMSEL

Ingress, 2016

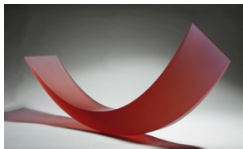
cast bent and layered gaffer glass clear cane and black grain, cut, hand smoothed and polished
diameter 530mm x depth 62mm
\$13,700



GALIA AMSEL

Inspirat 2, 2015

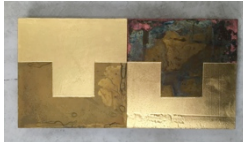
cast bullseye bronze and clear glass, hand smoothed and polished
950 x 420 x 175 mm
\$13,500



GALIA AMSEL

Blush, 2014

cast gaffer sapphire rose glass, sandblasted, acid etched and hand finished
435 x 1100 x 190 mm
\$15,000



STEPHEN BAMBURY

More on Secret Knowledge, Palmyra, 2014

chemical action and 23k gold on brass on ply
170 x 340 mm
\$7,200



STEPHEN BAMBURY

Fourteen Mirrors (VIII), 2014

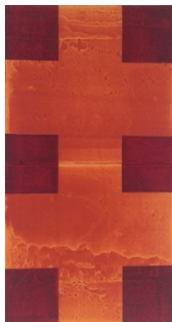
chemical action on aluminium, acrylic and chemical action on 12k white gold and silver
350 x 360 mm (two panels)
\$8,000



STEPHEN BAMBURY

Fourteen Mirrors (II), 2014

chemical action on aluminium, acrylic and 12k white gold
347 x 333 mm (2 panels)
\$8,000



STEPHEN BAMBURY

Visiting Confucius, 2013

acrylic on two aluminium panels
1224 x 652 mm
\$36,000



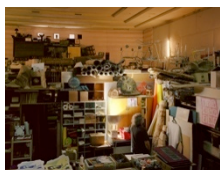
STEPHEN BAMBURY

KPS11, 2014

iron filings and acrylic on two aluminium panels
170 x 340 mm
\$7,200



CHRIS CORSON-SCOTT
Cliffs and Rockfalls, Awhitu Peninsula, 2016
archival pigment print
1500 x 1890 mm
\$8,000 (framed, UV plexi)



CHRIS CORSON-SCOTT
John Perry in his Workshop in the Regent Theatre, Helensville, 2016
archival pigment print
1200 x 1480 mm
\$6,500 (framed, museum glass)



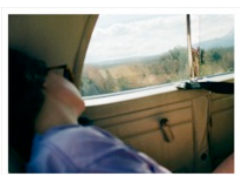
PHIL DADSON
March Music, 2016 (6 pieces, graphic notation series of 31)
mixed media / paint, ink, wax, burn and smoke marks on paper
560 x 760 mm each
\$980 each



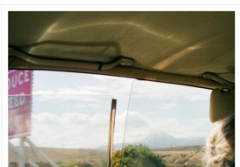
JOHN EDGAR
Lens, 2016
granite (China), marble (Italy)
290 x 290 x 61 mm
\$5,400



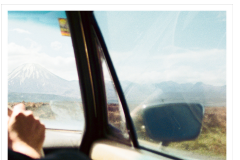
JOHN EDGAR
Lens, 2016
serpentine, granite (India)
390 x 390 x 84 mm
\$8,600



JENNIFER FRENCH
' "In order to build a solid aspiration for liberation from the cycle of existence, we must thoroughly examine our condition" - The Dalai Lama, 1994.' (Detail 1) 1996/2014
archival pigment print on Hahnemuhle Photo Rag Paper, 700 x 1000 mm
Edition 1 of 2 + 1 AP
\$ 2900 (unframed)



JENNIFER FRENCH
' "In order to build a solid aspiration for liberation from the cycle of existence, we must thoroughly examine our condition" - The Dalai Lama, 1994.' (Detail 3) 1996/2014
archival pigment print on Hahnemuhle Photo Rag Paper, 700 x 1000 mm
Edition of 2 sold, AP 1
\$ 2900 (unframed)



JENNIFER FRENCH
' "In order to build a solid aspiration for liberation from the cycle of existence, we must thoroughly examine our condition" - The Dalai Lama, 1994.' (Detail 9) 1996/2014
archival pigment print on Hahnemuhle Photo Rag Paper, 700 x 1000 mm
Edition 2 of 2 + 1 AP
\$ 2900 (unframed)

TRISH
CLARK
GALLERY



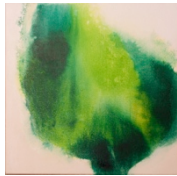
JENNIFER FRENCH

'*"In order to build a solid aspiration for liberation from the cycle of existence, we must thoroughly examine our condition"* - *The Dalai Lama, 1994.*' (Detail 8) 1996/2014

archival pigment print on Hahnemuhle Photo Rag Paper, 700 x 1000 mm

Edition of 2 sold, AP 1

\$ 2900 (unframed)



AMANDA GRUENWALD

Phthalo Green, 2016

oil on canvas

500 x 500 mm

\$980



AMANDA GRUENWALD

Green, Mauve, Pink, 2016

acrylic and oil on canvas

1800 x 1200 mm

\$6,750



JAE HOON LEE

Garden, 2010

lightjet print on archival paper, 1200 x 1200 mm

Edition of 5 sold, AP I

\$6,500



ALAN MILLER

Cold Front, Jack's Point, Queenstown, 2011

silver gelatin print, 362 x 240 mm

Edition 3 of 5

\$1,750 (framed)



ALAN MILLER

Craters of the moon, Taupo, 1997

silver gelatin print, 470 x 580 mm

Edition 2 of 5

\$1,750 (framed)



ALAN MILLER

Ohinemutu, Rotorua, 2012

silver gelatin print, 580 x 470 mm

Edition 2 of 5

\$1,750 (framed)



KAZU NAKAGAWA

Infinitive / bracier 1992

Cement and acrylic

480 x 340 x 75 mm

\$1850

TRISH
CLARK
GALLERY



KAZU NAKAGAWA
To weigh the fall of light V, 2016
pencil on paper/archival matt, 250gsm
324 x 450 x 31 mm (framed)
\$1200



KAZU NAKAGAWA
"/ the difference II, 1996
wood/oak, canvas, resin and mixed media
700 x 320 x 240 mm
\$4100



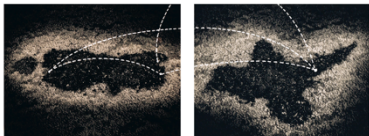
KAZU NAKAGAWA
From Place to no Place, Identity, 2015
cotton strips and acrylic paint
dimensions variable with 20 units approximately W 300mm x L 3000mm each
\$560 each



MARIE SHANNON
The House at Night, 1991
silver gelatin print, sepia, selenium and gold toned, 400 x 500 mm
Edition 10 of 15
\$1,900 (framed, conservation glass)



MARIE SHANNON
The House of Parmesan, 1991
silver gelatin print, sepia and selenium toned, 200 x 250 mm
Edition 11 of 20
\$1,400 (framed, conservation glass)



MARIE SHANNON
Map of the Places, 1992
diptych, silver gelatin prints, sepia toned, 500 x 600 mm each
Edition 4 of 12
\$3,700 (framed, museum glass)



ANN SHELTON
June 2004, Onaero Beach, Taranaki, looking north-east before dawn, 2004/2012
archival pigment print on Hahnemuhle Photo Rag paper, 1010 x 1245 mm
Edition 4 of 7
\$4,200 (framed)



ANN SHELTON
Whatipu, 2008
diptych, C-type photographs, 750 x 930 mm each
Edition 1 of 5
\$5,600 (framed)



ANN SHELTON
Wintering, after a Van der Velden study, Otira Gorge, 2008
diptych, C-type photographs, 930 x 750 mm each
Edition 7 of 8
\$5,600 (framed)