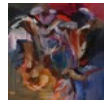


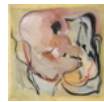
EEMYUN KANG | This Path Is Made By Walking
13 September – 20 October, 2019



Dream Under the Leaves, 2019
Oil on cotton
1400 x 1000 mm



Night, 2012
Oil on canvas
600 x 600 mm



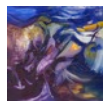
Corda, 2019
Oil on canvas
305 x 305 mm



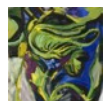
Floating With It's Wings, 2019
Oil on cotton
1400 x 1800 mm



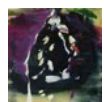
Family, 2019
Oil on canvas
200 x 300 mm



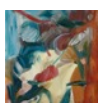
Night Path, 2019
Oil on canvas
955 x 1090 mm



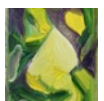
Still Life's Wonder, 2019
Oil on linen
510 x 410 mm



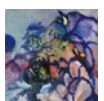
Purple Snow, 2014
Oil on canvas
300 x 300 mm



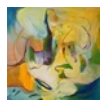
Ador, 2019
Oil on canvas
255 x 200 mm



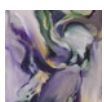
Naso, 2019
Oil on canvas
335 x 255 mm



Mountain, 2019
Oil on linen
510 x 410 mm



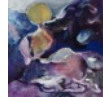
Luminous Afternoon, 2019
Oil on canvas
1890 x 1790 mm



Violet Flames, 2019
Oil on hemp
340 x 263 mm

TRISH
CLARK
GALLERY

Cocoon, 2019
Oil on canvas
350 x 250 mm



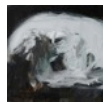
Silver Slopes, 2019
Oil on linen
510 x 410 mm



Passagio, 2019
Oil on hemp
600 x 700 mm



If Wind I Mean The Fire, 2014
Oil on canvas
1400 x 1900 mm



Moon Head, 2008
Oil on linen
550 x 700 mm



Pasture, 2019
Oil on hemp
800 x 600 mm

Traveler, there is no path.
The path is made by walking.

Traveler, the path is your tracks
And nothing more.
Traveler, there is no path
The path is made by walking.
By walking you make a path
And turning, you look back
At a way you will never tread again
Traveler, there is no road
Only wakes in the sea. Antonio Machado

Trish Clark Gallery is pleased to present the first solo exhibition in Australasia by 39-year old Korean-born Eemyun Kang. Now based in Milan after having spent almost her entire artistic career in the cross-cultural urban environment of London and showing at prestigious galleries in Seoul, New York and London, Kang has recently taken time out for her first child. She returns with this solo exhibition, admitting to retaining a sense of dislocation, originally occasioned when she left Korea for London to further her studies, and accepting this as a defining element in her work. Her underlying interest in hybridity stems from this experience, her fictional hybrid worlds existing in the constant interplay between subject and object, reality and subconscious, known and unknown. Her paintings alternate between figuration and abstraction, using gestural and energetic brushstrokes to create elaborate mysterious but suggestive works on very varied scales. With a vocabulary that incorporates a range of suggestively biomorphic forms, Kang's subjects are never quite as they seem; in a state of perpetual metamorphosis or evolution, they remain inherently unknowable.

Kang's work has been exhibited widely in the UK and internationally. Selected solo shows include *Dozing River* (2010) at Tina Kim Gallery in New York and Fungalland and the *Stranded Mother Whale* (2012) at Trondheim Kunstmuseum, Norway. Kang has also participated at various group shows around the world, at Kukje Gallery, Seoul; Art Seonje Centre, Seoul; Korean Cultural Centre, London; Bridgette Mayer Gallery, Philadelphia; Union Gallery, London; and Royal Academy of Arts, London.