

www.trishclark.co.nz  
trish@trishclark.co.nz  
T +64 9 360 0840  
C +64 21 378940

142 Great N<sup>o</sup> Rd  
Grey Lynn  
Auckland 1021  
New Zealand

**TCG**  
TRISH CLARK GALLERY

## THE XX FACTOR 2.0

Stella Brennan  
Julia Morison  
Marie Shannon  
Heather Straka  
Christine Webster

## CATALOGUE OF WORKS



CHRISTINE WEBSTER

*The Skeleton*, 1997/2015

Colour digital photograph

1180 x 1500 mm

\$8,500

www.trishclark.co.nz  
trish@trishclark.co.nz  
T +64 9 360 0840  
C +64 21 378940

142 Great N<sup>o</sup> Rd  
Grey Lynn  
Auckland 1021  
New Zealand

**TCG**  
TRISH CLARK GALLERY



JULIA MORISON  
*Spellbound 02, 2019*  
Oil on polyurethane board  
1290 x 1080 mm  
\$22,000

www.trishclark.co.nz  
trish@trishclark.co.nz  
T +64 9 360 0840  
C +64 21 378940

142 Great N<sup>th</sup> Rd  
Grey Lynn  
Auckland 1021  
New Zealand

**TCG**  
TRISH CLARK GALLERY



JULIA MORISON

*Spellbound 01, 2019*

Oil on polyurethane board

1290 x 1080 mm

\$22,000

www.trishclark.co.nz  
trish@trishclark.co.nz  
T +64 9 360 0840  
C +64 21 378940

142 Great N<sup>o</sup> Rd  
Grey Lynn  
Auckland 1021  
New Zealand

**TCG**  
TRISH CLARK GALLERY



HEATHER STRAKA

*Somebodies Eyes 1*, 2015

Oil on cotton on board

860 x 710 mm framed

\$18,000



www.trishclark.co.nz  
trish@trishclark.co.nz  
T +64 9 360 0840  
C +64 21 378940

142 Great N<sup>o</sup> Rd  
Grey Lynn  
Auckland 1021  
New Zealand

**TCG**  
TRISH CLARK GALLERY



HEATHER STRAKA

*Somebodies Eyes 11, 2015*

Oil on canvas

860 x 710mm framed

\$18,000

www.trishclark.co.nz  
trish@trishclark.co.nz  
T +64 9 360 0840  
C +64 21 378940

142 Great N<sup>th</sup> Rd  
Grey Lynn  
Auckland 1021  
New Zealand

**TCG**  
TRISH CLARK GALLERY



STELLA BRENNAN

*Object Permanence*, 2018

Single channel video

Duration: 12:53

\$11,000

www.trishclark.co.nz  
trish@trishclark.co.nz  
T +64 9 360 0840  
C +64 21 378940

142 Great N<sup>th</sup> Rd  
Grey Lynn  
Auckland 1021  
New Zealand

**TCG**  
TRISH CLARK GALLERY



MARIE SHANNON

*Dollars*, 2016

Archival inkjet print

635 x 800 mm unframed

\$2,250 (unframed)

www.trishclark.co.nz  
trish@trishclark.co.nz  
T +64 9 360 0840  
C +64 21 378940

142 Great N<sup>th</sup> Rd  
Grey Lynn  
Auckland 1021  
New Zealand

**TCG**  
TRISH CLARK GALLERY



STELLA BRENNAN

*More Love Hours Than Can Ever Be Repaid*, 2003

Photographs on Fuji archival paper

1200 x 1500 mm each (diptych)

\$10,000



www.trishclark.co.nz  
trish@trishclark.co.nz  
T +64 9 360 0840  
C +64 21 378940

142 Great N<sup>th</sup> Rd  
Grey Lynn  
Auckland 1021  
New Zealand

**TCG**  
TRISH CLARK GALLERY



MARIE SHANNON

*Map of My Day*, 1992

Silver gelatin photograph, selenium toned

500 x 400 mm unframed

\$1,350 (unframed)

www.trishclark.co.nz  
trish@trishclark.co.nz  
T +64 9 360 0840  
C +64 21 378940

142 Great N<sup>o</sup> Rd  
Grey Lynn  
Auckland 1021  
New Zealand

**TCG**  
TRISH CLARK GALLERY



JULIA MORISON  
*Abracadabra*, 2019  
Oil on canvas  
2204 x 1250 mm  
\$35,000

www.trishclark.co.nz  
trish@trishclark.co.nz  
T +64 9 360 0840  
C +64 21 378940

142 Great N<sup>th</sup> Rd  
Grey Lynn  
Auckland 1021  
New Zealand

**TCG**  
TRISH CLARK GALLERY



25



07



29



75



53



38



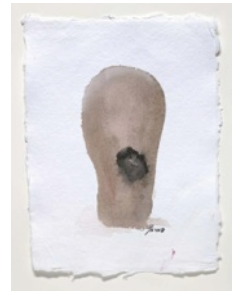
10



44



32



28

JULIA MORISON

*Head[case] working drawings, 2019*

10 individual works, ink on rag paper

330 x 240 mm each

\$1,800 each

www.trishclark.co.nz  
trish@trishclark.co.nz  
T +64 9 360 0840  
C +64 21 378940

142 Great N<sup>o</sup> Rd  
Grey Lynn  
Auckland 1021  
New Zealand

**TCG**  
TRISH CLARK GALLERY



JULIA MORISON

*I'm done... Take ten*, 2018

Glazed porcelain

285 x 160 mm

\$9,000



www.trishclark.co.nz  
trish@trishclark.co.nz  
T +64 9 360 0840  
C +64 21 378940

142 Great N<sup>th</sup> Rd  
Grey Lynn  
Auckland 1021  
New Zealand

**TCG**  
TRISH CLARK GALLERY



JULIA MORISON

*100 Headless Woman*, 1995

Found postcards

2032 x 1524 mm

\$20,000

www.trishclark.co.nz  
trish@trishclark.co.nz  
T +64 9 360 0840  
C +64 21 378940

142 Great N<sup>o</sup> Rd  
Grey Lynn  
Auckland 1021  
New Zealand

**TCG**  
TRISH CLARK GALLERY



HEATHER STRAKA

*Self-portrait, 2020*

Oil on canvas

700 x 500

\$11,000

www.trishclark.co.nz  
trish@trishclark.co.nz  
T +64 9 360 0840  
C +64 21 378940

142 Great N<sup>th</sup> Rd  
Grey Lynn  
Auckland 1021  
New Zealand

**TCG**  
TRISH CLARK GALLERY



HEATHER STRAKA

*Teamwork (part II)*, 2019

Archival pigment photograph on Photorag Ultrasmooth

1210 x 2060 mm paper size, 1330 x 2180mm framed

\$15,000 (framed, museum glass)



Dear Marie, How are you? I  
am sitting in my little flat on  
Sunday night, thinking that  
this must be the slowest week I  
can remember in quite some  
time.

MARIE SHANNON

*The Aachen Faxes*, 2012

Digital video and sound

Duration: 15:30

\$2,000 (excluding hardware)



www.trishclark.co.nz  
trish@trishclark.co.nz  
T +64 9 360 0840  
C +64 21 378940

142 Great N<sup>o</sup> Rd  
Grey Lynn  
Auckland 1021  
New Zealand

**TCG**  
TRISH CLARK GALLERY



MARIE SHANNON

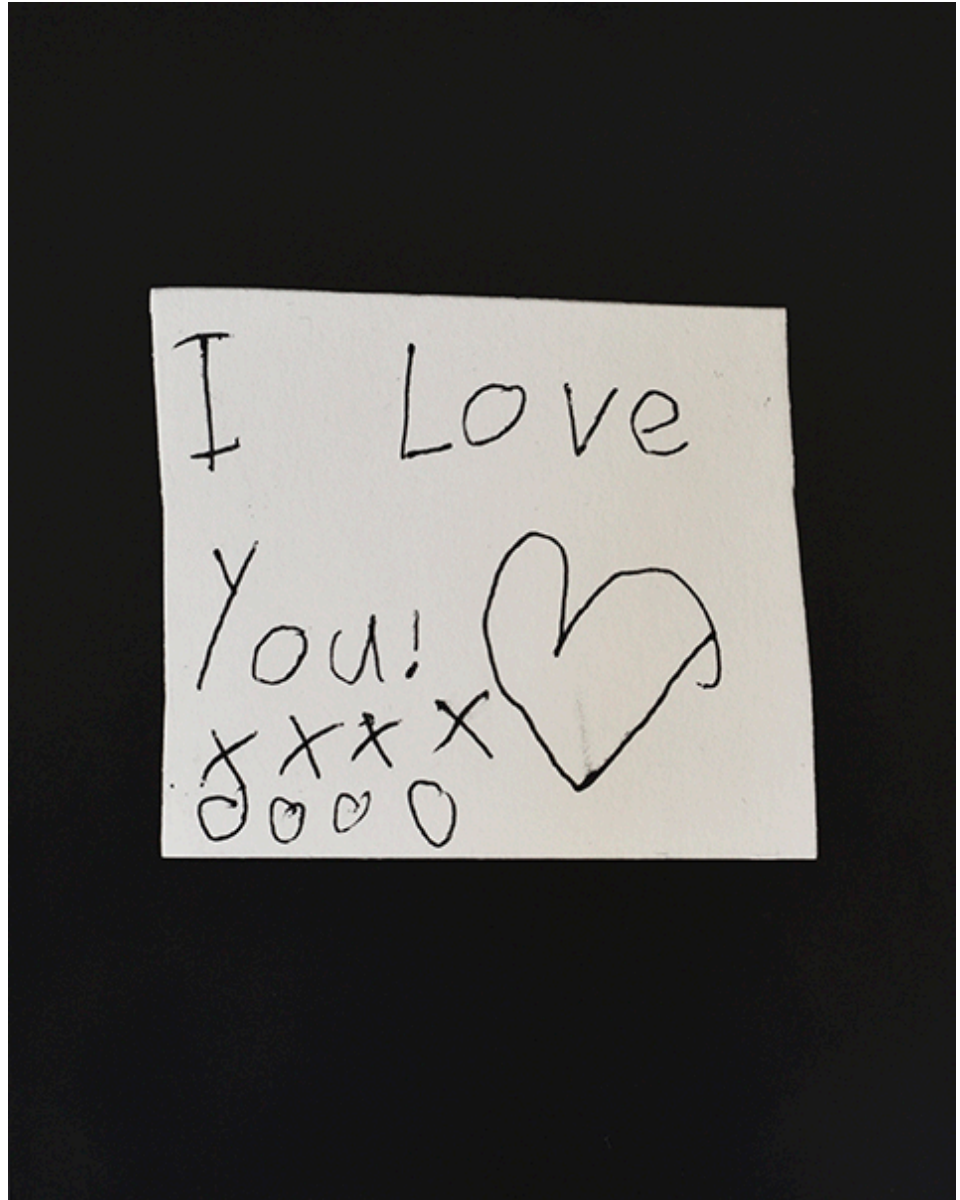
*Home and Abroad*, 1990

Silver gelatin photograph, selenium toned

580 x 670 mm framed

\$2,050 (framed)

**TCG**  
TRISH CLARK GALLERY



MARIE SHANNON

*I Love You #2, 2005*

Silver gelatin photograph, selenium toned

592 x 483 mm

\$2600 (framed)