

AMANDA GRUENWALD | Floor Paintings 13 September – 11 October 2024



Floor Painting #14, 2024
Acrylic, flashe, spray-paint and oil on raw canvas
1310 x 1250 mm
\$13,000



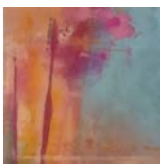
Floor Painting #5, 2024
Acrylic, flashe, spray-paint and oil on raw canvas
2100 x 1700 mm
\$20,000



Floor Painting #9, 2024
Acrylic and flashe on raw canvas
850 x 750 mm
\$7,500



Floor Painting #1, 2024
Acrylic and flashe on raw canvas
3000 x 1700 mm
\$25,000



Floor Painting #8, 2024
500 x 500 mm
Acrylic, flashe, spray paint and oil on raw canvas
\$4,000



Floor Painting #6, 2024
Acrylic and flashe on raw canvas
1980 x 1520 mm
\$18,000



Floor Painting #10, 2024
2300 x 1600 mm
Acrylic, flashe, spray paint and oil on raw canvas
\$20,000



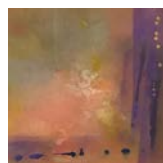
Floor Painting #12, 2024
Acrylic, flashe, spray-paint and oil on raw canvas
900 x 850 mm
\$7,500



Floor Painting #7, 2024
Acrylic, flashe, spray-paint and oil on raw canvas
1600 x 1250 mm
\$15,000



Floor Painting #3, 2024
Acrylic, flashe, spray-paint and oil on raw canvas
610 x 460 mm
\$4,000



Floor Painting #17, 2024
600 x 600 mm
Acrylic, flashe, spray paint and oil on raw canvas
\$5,000



Floor Painting #16, 2024
1350 x 1300 mm
Acrylic, flashe and spray paint on raw canvas
\$13,000



Floor Painting #15, 2024
850 x 650 mm
Acrylic, flashe, spray paint on raw canvas
\$6,500

Amanda Gruenwald's recent paintings represent a bold new direction – initially inspired by the markings found on her studio drop cloths, where drips, pools, wipes, splashes and sprays of excess paint have accumulated in the process of creating her earlier works. Her new paintings respond to the potential of this residue, navigating the liminal space between intention and concurrent attempts to harness the role of chance.

She states, "I started by recognising a painterly language and visual grammar in these random marks. My new floor-based paintings respond to these reference points and deploy them into something new and personal." Working on unstretched canvas on the studio floor allows "a really different experience. I'm able to walk on the canvas and be 'in' the painting as I make it. There's a real connection between the body, the materials and the resulting mark making. I can compose from within the picture." These floor paintings draw on diverse histories – Neo-Impressionism, action and colour field painting, gestural and geometric abstraction – in conversation with an array of contemporary international and local practices.

Amanda Gruenwald lives and works in Tāmaki Makaurau Auckland. She graduated from the Elam School of Fine Arts, University of Auckland in 2012. Her career highlights include *Surface Affect* at the Govett-Brewster Art Gallery / Len Lye Centre with Jeena Shin and Michael Zavros in 2017, and a major commission of nine works for Cordis Hotel Auckland in association with Coupland Cormack in 2021. *Floor Paintings* is the artist's third solo show with Trish Clark Gallery.