

TRISH  
CLARK  
GALLERY

THREE ANGLES | Alberto Garcia-Alvarez + Stephen Bambury, curated by Judy Millar



ALBERTO GARCIA-ALVAREZ  
*The Third Day*, 1983-2021  
mixed media and collage on canvas  
2000 x 3000 mm  
\$60,000

TRISH  
CLARK  
GALLERY

THREE ANGLES | Alberto Garcia-Alvarez + Stephen Bambury, curated by Judy Millar



ALBERTO GARCIA-ALVAREZ  
406, 2005  
mixed media on wood  
630 x 470 mm  
\$8,500



ALBERTO GARCIA-ALVAREZ  
*LUX*, 1964  
wax on card  
140 mm diameter  
\$7,500

TRISH  
CLARK  
GALLERY

THREE ANGLES | Alberto Garcia-Alvarez + Stephen Bambury, curated by Judy Millar



ALBERTO GARCIA-ALVAREZ  
*24 Olas - 630*,  
acrylic on board  
650 mm diameter  
\$11,500



ALBERTO GARCIA-ALVAREZ  
*The First System*, 1965  
mixed media on card  
250 mm diameter  
\$9,500

TRISH  
CLARK  
GALLERY

THREE ANGLES | Alberto Garcia-Alvarez + Stephen Bambury, curated by Judy Millar



ALBERTO GARCIA-ALVAREZ  
*The 8th*, 2023  
acrylic, rope on canvas  
1655 x 1105 mm  
\$25,000

TRISH  
CLARK  
GALLERY

THREE ANGLES | Alberto Garcia-Alvarez + Stephen Bambury, curated by Judy Millar



ALBERTO GARCIA-ALVAREZ

*Untitled*, 1991

oil on linen

940 x 840 mm

\$18,500

[www.trishclark.co.nz](http://www.trishclark.co.nz) | [trish@trishclark.co.nz](mailto:trish@trishclark.co.nz) | **T** +649 360 0840 | **C** +64 21 378 940

142 Great North Rd, Grey Lynn | Tamaki Makarau Auckland 1021 | Aotearoa New Zealand

TRISH  
CLARK  
GALLERY

THREE ANGLES | Alberto Garcia-Alvarez + Stephen Bambury, curated by Judy Millar



ALBERTO GARCIA-ALVAREZ  
*Movement*, 1990-1991  
oil on linen  
940 x 845 mm  
\$16,000



TRISH  
CLARK  
GALLERY

THREE ANGLES | Alberto Garcia-Alvarez + Stephen Bambury, curated by Judy Millar



ALBERTO GARCIA-ALVAREZ  
*Lepanto*, 1989  
mixed media on board  
604 x 194 mm  
\$7,500

[www.trishclark.co.nz](http://www.trishclark.co.nz) | [trish@trishclark.co.nz](mailto:trish@trishclark.co.nz) | **T** +649 360 0840 | **C** +64 21 378 940  
142 Great North Rd, Grey Lynn | Tamaki Makarau Auckland 1021 | Aotearoa New Zealand

TRISH  
CLARK  
GALLERY

THREE ANGLES | Alberto Garcia-Alvarez + Stephen Bambury, curated by Judy Millar



ALBERTO GARCIA-ALVAREZ  
*From my window 3*, 2023  
mixed media on board  
797 x 600 mm  
\$11,500

[www.trishclark.co.nz](http://www.trishclark.co.nz) | [trish@trishclark.co.nz](mailto:trish@trishclark.co.nz) | **T** +649 360 0840 | **C** +64 21 378 940  
142 Great North Rd, Grey Lynn | Tamaki Makarau Auckland 1021 | Aotearoa New Zealand

THREE ANGLES | Alberto Garcia-Alvarez + Stephen Bambury, curated by Judy Millar



ALBERTO GARCIA-ALVAREZ  
*APOLLO*, (from the series *Cross Sections*) 1982  
oil on wood  
700 x 620 mm  
\$12,500

THREE ANGLES | Alberto Garcia-Alvarez + Stephen Bambury, curated by Judy Millar



ALBERTO GARCIA-ALVAREZ  
*HEX*, 2024/2025  
mixed media and collage on composite core, timber and plywood  
2000 x 2300 diameter  
POA

TRISH  
CLARK  
GALLERY

THREE ANGLES | Alberto Garcia-Alvarez + Stephen Bambury, curated by Judy Millar



ALBERTO GARCIA-ALVAREZ  
*LUZYSOMBRAS (Light and Shadow)* 2020 -26  
mixed media on board  
1190 x 1200 mm  
\$21,500

THREE ANGLES | Alberto Garcia-Alvarez + Stephen Bambury, curated by Judy Millar



ALBERTO GARCIA-ALVAREZ  
*Untitled, 2024*  
mixed media  
430 mm diameter  
\$5,500

TRISH  
CLARK  
GALLERY

THREE ANGLES | Alberto Garcia-Alvarez + Stephen Bambury, curated by Judy Millar



ALBERTO GARCIA-ALVAREZ  
*The Sun's Birth*, 2025  
mixed media  
220 mm diameter  
\$5,500

[www.trishclark.co.nz](http://www.trishclark.co.nz) | [trish@trishclark.co.nz](mailto:trish@trishclark.co.nz) | **T** +649 360 0840 | **C** +64 21 378 940  
142 Great North Rd, Grey Lynn | Tamaki Makarau Auckland 1021 | Aotearoa New Zealand

TRISH  
CLARK  
GALLERY

THREE ANGLES | Alberto Garcia-Alvarez + Stephen Bambury, curated by Judy Millar



ALBERTO GARCIA-ALVAREZ  
*Mercurio*, 12024  
mixed media  
320 mm diameter  
\$5,500

[www.trishclark.co.nz](http://www.trishclark.co.nz) | [trish@trishclark.co.nz](mailto:trish@trishclark.co.nz) | **T** +649 360 0840 | **C** +64 21 378 940  
142 Great North Rd, Grey Lynn | Tamaki Makarau Auckland 1021 | Aotearoa New Zealand



TRISH  
CLARK  
GALLERY

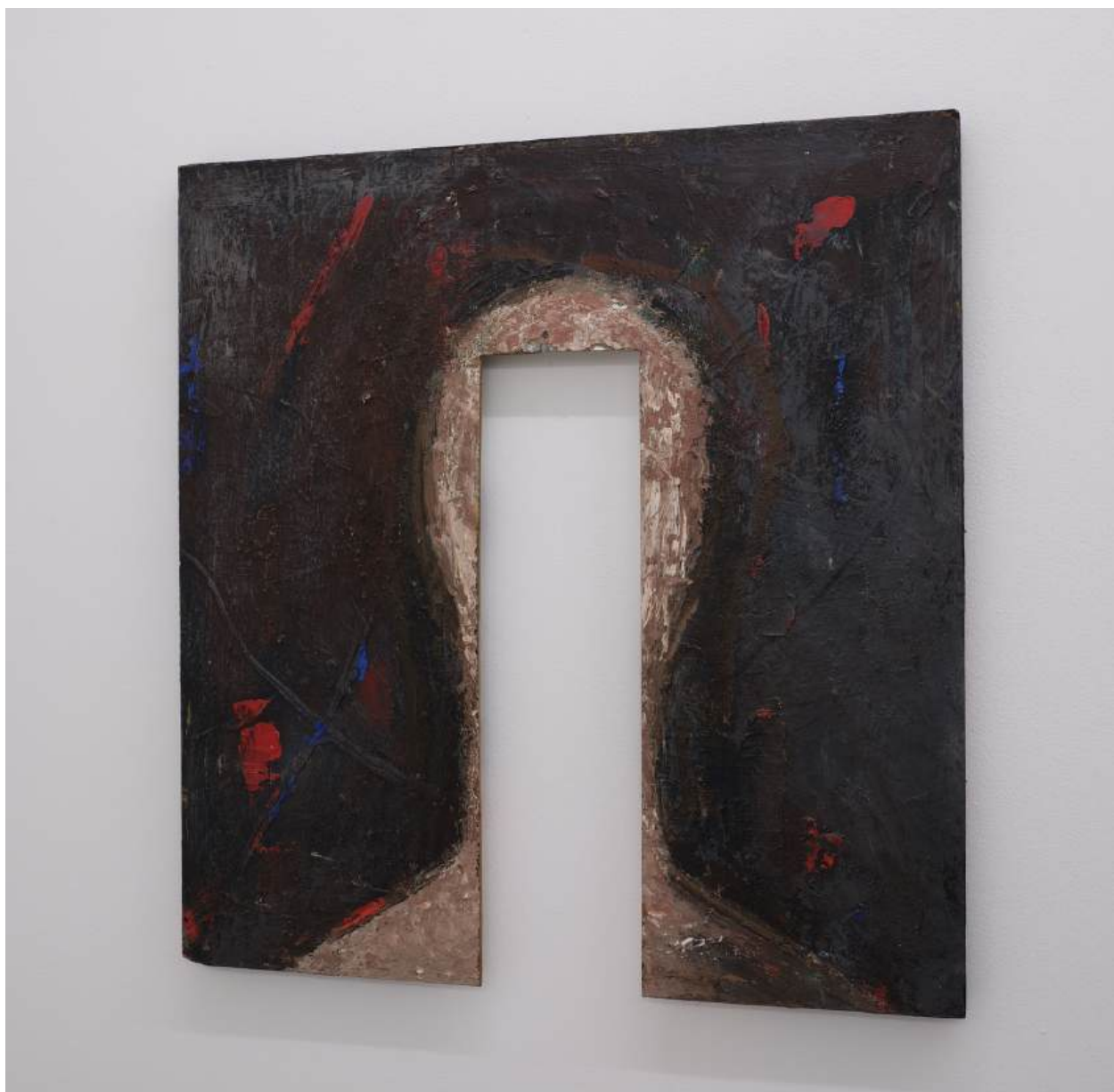
THREE ANGLES | Alberto Garcia-Alvarez + Stephen Bambury, curated by Judy Millar



ALBERTO GARCIA-ALVAREZ  
*Untitled*, 1982/2021  
mixed media on wood  
200 x 200 x 100 mm  
\$6,500

TRISH  
CLARK  
GALLERY

THREE ANGLES | Alberto Garcia-Alvarez + Stephen Bambury, curated by Judy Millar



ALBERTO GARCIA-ALVAREZ  
*Self-Portrait* 1996  
mixed media and collage on board  
600 x 570 mm  
\$9,500

THREE ANGLES | Alberto Garcia-Alvarez + Stephen Bambury, curated by Judy Millar



ALBERTO GARCIA-ALVAREZ  
*HOLA*, 1982  
mixed media and collage on board  
870 mm diameter  
\$9,500

TRISH  
CLARK  
GALLERY

THREE ANGLES | Alberto Garcia-Alvarez + Stephen Bambury, curated by Judy Millar



ALBERTO GARCIA-ALVAREZ  
*Collage*, 2023  
mixed media on board with collage  
435 x 235 mm  
\$7,500



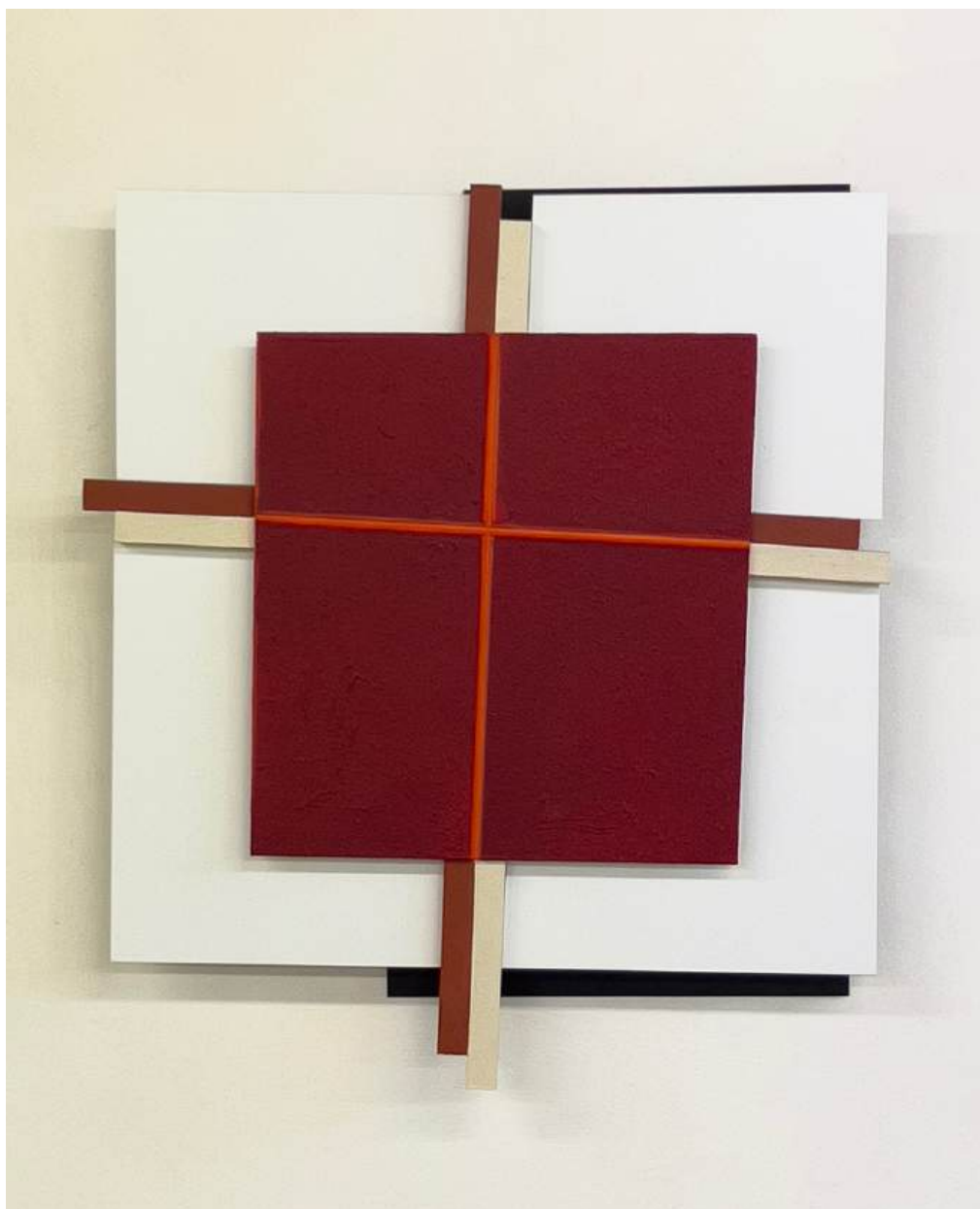
STEPHEN BAMBURY  
*50/50 Fire & Ice*, 2006  
acrylic on multiple aluminium panels  
770 x 600 mm  
\$26,600



STEPHEN BAMBURY  
*Abfall (202401), Perche, 2024*  
Lacquer, Ducate Double Gold 23k leaf on OSB laminate wood panel  
297 x 60 x 50 mm  
NFS

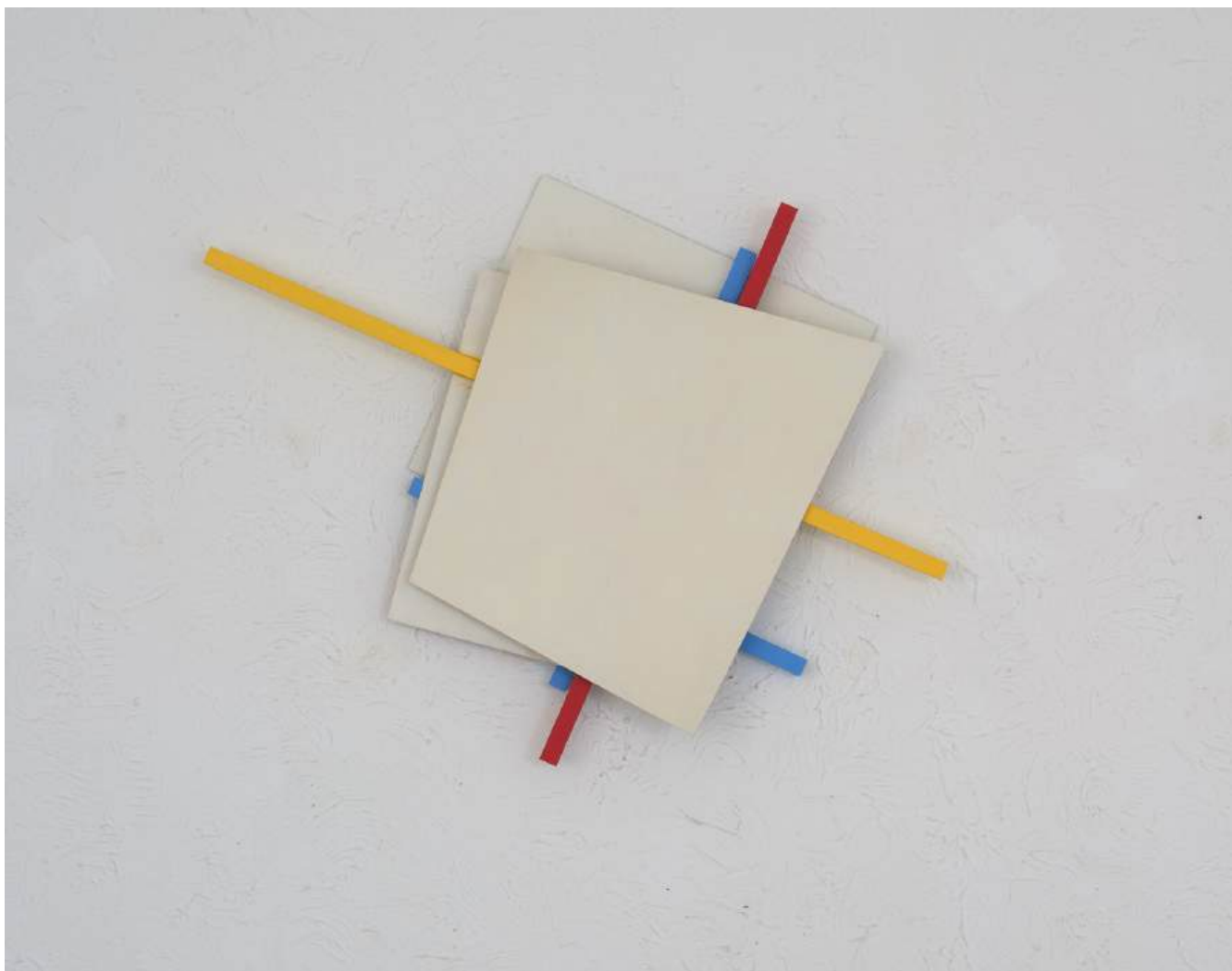


STEPHEN BAMBURY  
*"as constructive elements of the whole"*, 1988  
acrylic and aluminium paint on canvas  
725 mm diameter  
\$25,000



STEPHEN BAMBURY  
*A Bouquet for Hilma*, 2021/2022  
acrylic on multiple aluminium panels and aluminium channel  
770 x 600 mm  
\$18,000





STEPHEN BAMBURY  
*Quite White (For L.W.)*, 2022/2025  
acrylic on multiple aluminium extrusion and channels  
770 x 1030 mm  
\$35,000



STEPHEN BAMBURY  
*Paradox of Knowledge (Purpleheart)*, 2022  
Turned purpleheart wood and 23k gold leaf  
150 mm diameter  
\$14,000



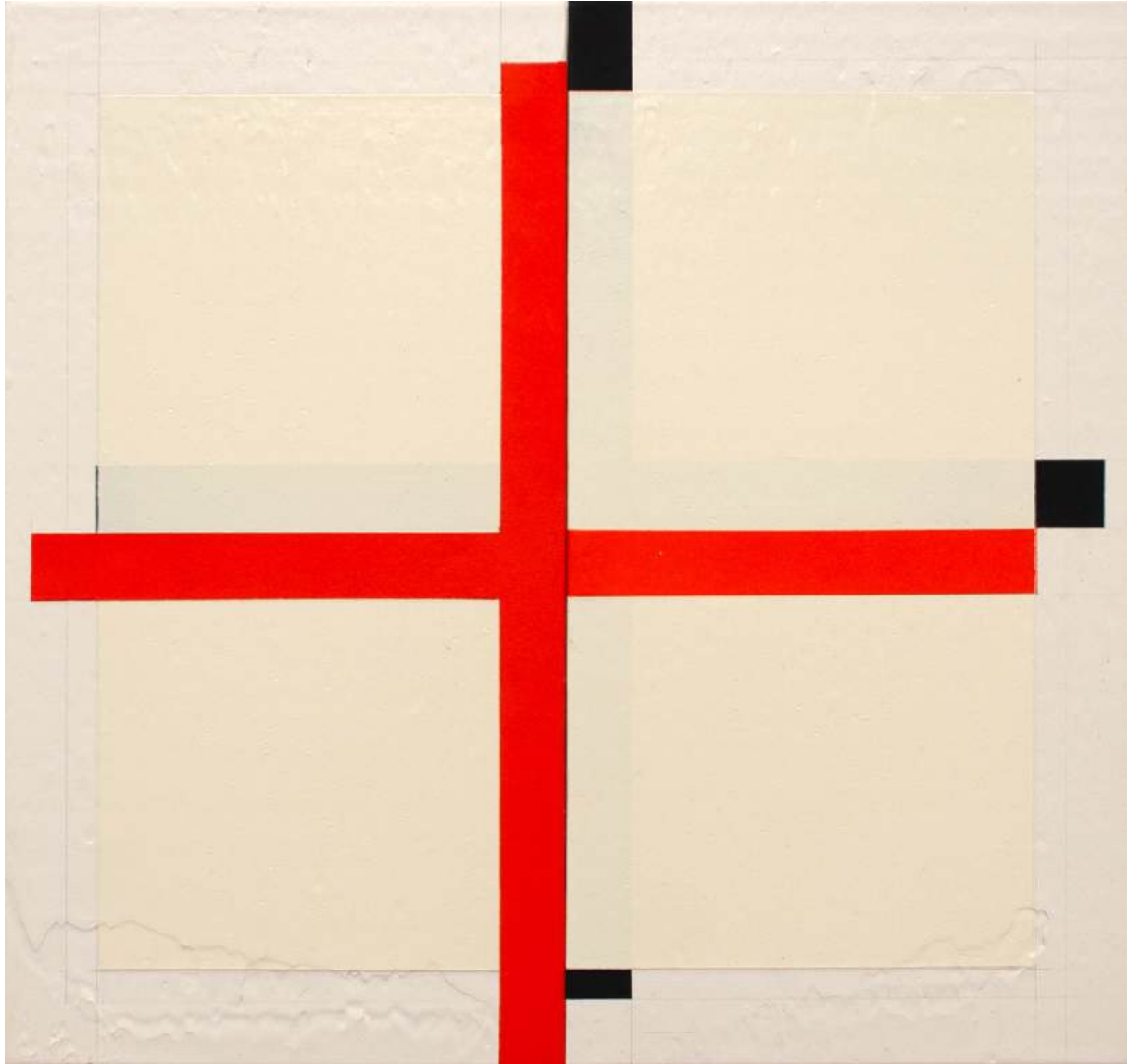
STEPHEN BAMBURY

*More on Good Government and Bad Government, 2024*

30mm rusted steel rebar, 25mm rusted hollow square steel tube, 5 x 'Skull' photographic images

dimensions variable

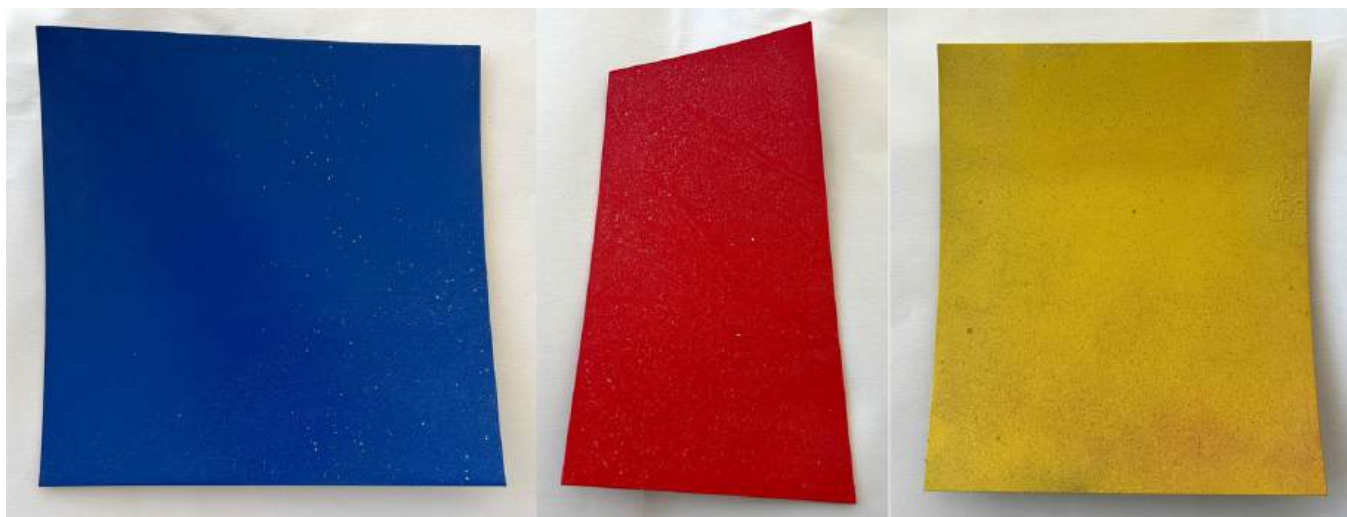
NFS



STEPHEN BAMBURY  
*SC109162*, 2010  
acrylic and pencil on 2 aluminium panels  
512 x 542 mm  
\$22,000



STEPHEN BAMBURY  
*Pompeii*, 2006/2021/2022/2024  
iron filings and acrylic on 2 aluminium panels  
2348 x 2404 mm  
\$120,000



STEPHEN BAMBURY

*WAORYB*, 2022

3 spray enamel on 3 curved aluminium panels

235 x 235 mm: 270 x 160 mm: 240 x 205 mm

\$18,000 for the 3 panels, can be installed variously



STEPHEN BAMBURY  
*Un Homme Maintenant*, 2018/2019  
acrylic on multiple aluminium panels  
820 x 570 mm  
\$26,600



STEPHEN BAMBURY  
*FAMILY (Abfall, 205701)*, 1957  
Meccano triangles, nuts and bolts  
38 x 38 x 10 mm  
NFS





STEPHEN BAMBURY  
SC089128, 2008  
iron filings and acrylic on 2 aluminium panels  
542 x 542 mm  
\$22,000



STEPHEN BAMBURY  
*"we affirm depth"* 1988  
acrylic and aluminium paint on canvas  
725 mm diameter  
\$25,000



STEPHEN BAMBURY  
*Five Spot*, 2023/2024  
acrylic on multiple aluminium panels  
285 x 215 mm  
\$18,000